

G

General Information

Our Mission:

“To be the leading private provider of training and education services in Ireland, renowned for innovation, creativity and service quality, operating efficiently and profitably and ensuring the highest level of satisfaction for all our customers. Our programs will provide students with opportunities to launch, enhance, or change careers in a diverse global society”.

Course Directors

Each course is appointed a course director who is there to guide and support you through the course. Directors are available at an allocated time on a weekly basis. Confidentiality & discretion are ensured and you are invited to avail of their professional experience & guidance.

Key Note Speakers

Each year Portobello Institute welcomes a variety of keynote speakers to the college. They will speak exclusively about their experiences in the industry. Each speaker has carved out a successful and fruitful career in their area of expertise and are well respected in their field. Your course director will give you further details of the keynote speakers for your course throughout the year.

Work Placement Programmes- Full Time Courses Only

Our aim is to help you gain successful employment in your chosen field. Portobello Institute's work experience programme provides you with an introduction to your chosen industry, which will then usually pave the way for employment opportunities within the industry of your choice. The placement programme will enhance your CV, giving you some experience and your first reference from within the industry.

Job Placements - Careers Advice

All students also receive training on interview techniques, CV preparation and personal presentation. Portobello Institute has built up an invaluable network of contacts both nationally and internationally. Businesses from all sectors recruit directly from Portobello Institute. We ensure that every student receives expert, on-going assistance and guidance in this critically important area.

Learner Support

Our dedicated learner support team is here to offer advice and guidance when a learner is experiencing academic, disciplinary or personal problems. At Portobello Institute we strive to ensure that each learner receives equal opportunity to excel in their educational experience. Any learners who require disability support, academic support or advice on personal development are invited to contact learner support. A class representative system is also put in place by learner support to ensure that each class is given a platform to voice their opinions and suggestions.

International Students

Studying in a foreign country is a life changing opportunity and offers interesting challenges. Over the years, we have welcomed many students from all backgrounds to study in our college and we are delighted to offer you any assistance and support you may need whilst you are studying at Portobello Institute.

International Students - Applications

Entry onto courses is by direct application with all relevant documentation. You will require the following documents to submit with your application form:

- Copy of your passport
 - Current Student Visa
 - Copy of GNIB card
 - Copy of attendance letter from previous college if relevant
- Students applying from outside of Ireland please see Department of Justice & Law Reform Student Visa Guideline (www.justice.ie)

Mature Students

In Portobello Institute we are committed to lifelong learning and we welcome mature students to the college. We feel their presence and life experience enhances the overall dynamic of the college and usually increases the high standard of work within any group.

Student Requirements

Students should be aware that in order to complete and pass a course successfully, it requires both time and dedication to study and complete course assignments on a weekly basis. The amount of time can only be approximated as each student's study rate varies. We have estimated that on average students will be required to spend from 3 to 10 hours studying and completing course work each week. The college reserves the right to request any student to vacate their place if they are causing unnecessary disruption due to their behaviour.

Terms of Enrolment

Course Fees are outlined on the Fee Schedule. Course fees must be paid in full on or before the commencement date of the course. Except where stated, all fees are non-refundable. No fee refund will be made to students who fail to attend classes or do not finish the course.

Course Books and Internet Access

A list of recommended text books will be given to students following enrolment. All books are available from Amazon.com.

Workshops

Each year, some students are keen to increase their qualification and knowledge range and we facilitate this by offering some optional or Workshop courses. They are not included in the course fee but are offered to students at a much-reduced rate. Further details of the Workshops are available from our course coordinators or on our website (www.Portobelloinstitute.ie).



College Life

Location/Accommodation

The college is situated within the heart of Dublin, close to the main shopping areas and less than fifteen minutes walk from the cosmopolitan area of Temple Bar. All Buses and the Luas run within ten minutes walk from the College and train and DART stations are near by. Due to the college's central location there is a full range of accommodation available to suit your requirements, tastes and budgets.

College Facilities

Portobello Institutes impressive building is made up of bright and spacious classrooms which helps promote a calm environment for learning. The college is fully equipped with a computer laboratory with full Internet connection, audiovisual equipment, overhead projectors and screens and various practical equipment necessary for each course.

Recreation

The college atmosphere is friendly, enjoyable and one of relaxed learning. The college has a student rec room where students can go to get a welcome break from classes and socialise with their peers.

Graduation

At the end of the course year the college hosts its annual Graduation Ceremony, at which students are presented with their Portobello Institute Certificate. Special awards are announced on the day for student achievements such as the Outstanding Achievement award and Student of the Year Awards. A photographer will be present on the day to take photos of you in your cap and gown. This is a wonderful conclusion for all your hard work throughout the year.

Car Parking

Parking is available from 6.15pm. As parking on Lr. Dominick Street is metered, you will have to pay the metre until 7pm. There is limited parking available at weekends and in the run-up to Christmas. The college

does not provide car-parking in the small yard at the rear of 40 Lr. Dominick Street. This is a private car park and clamping occurs to unauthorised vehicles.

Application Procedure

Application for entry is made directly to Portobello Institute for all courses. Completed application forms can be returned via fax (01 872 1989), posting it directly to the school with the appropriate booking fee or alternatively you can submit your application on-line via our website www.portobelloinstitute.ie. Fees are accepted by cheque, postal order, and all major credit cards. Places are allocated on a first come first served basis. Due to the practical nature of the majority of courses, limited places are available and early booking is advised. If an interview is required, you will be contacted and given a time and date for the interview. If the time and date do not suit you alternatives may be arranged.

Open Days

Each year we host several Open Days and Evenings to give prospective students the opportunity to meet our tutors face to face and ask them any questions they may have on our courses. Its a great opportunity to view our building and facilities and we'd be delighted to see you there. We also run Information sessions nationwide so keep checking our website for latest dates and times.

Scholarships

Each year we offer a number of scholarships across our departments. These are designed to provide full funding to suitable candidates. For further information please visit our website: www.portobelloinstitute.ie.

— EST. 1981 —

PORTOBELLO
INSTITUTE

Accreditation

Portobello Institute has received formal recognition from different organisations in a number of countries throughout the world. Our current policy is to develop recognition which is most significant to our students on a global basis.

FETAC

Portobello Institute is quality assured and provides awards with the National Accreditation Body, FETAC (Further Education and Training Awards Council) All FETAC awards are part of the National Framework of Qualifications(NFQ).



This ensures that your award is nationally and internationally recognised and that the award can create further learning opportunities for you. The FETAC awards provided by Portobello Institute are at level 5 and 6 on the NFQ.

The National Framework of Qualifications (NFQ)

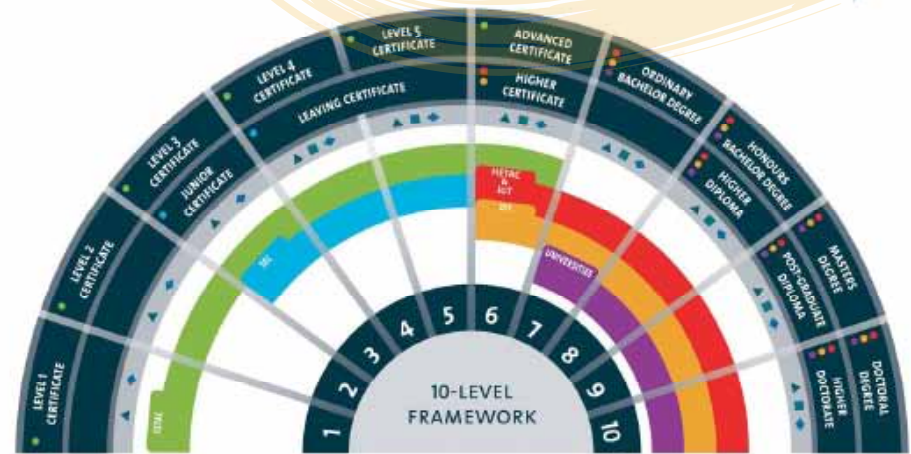
The NFQ is a ten level framework that enables you to quickly see how one award compares with others. All FETAC awards are part of the National Framework of Qualifications and are placed at levels 1 – 6. All HETAC awards are part of the National Framework of Qualifications and are placed at levels 6-10.

The Framework helps you to:

- make informed decisions about your qualification choices and to consider progression opportunities available to you.
- explain to others what qualifications you hold, or are studying for.
- relate awards gained abroad or in Ireland.

NATIONAL FRAMEWORK OF QUALIFICATIONS

Údarás Náisiúnta
Cáilíochtaí na hÉireann
National Qualifications
Authority of Ireland



AWARDING BODIES

- FETAC - Further Education and Training Awards Council
- SEC - State Examinations Commission (Department of Education & Science)
- HETAC - Higher Education and Training Awards Council
- IAI - Institute of Technology (under direction award of specialised body under Designated Authority from NQAI)
- IET - Institute of Technology
- Universities

AWARDS IN THE FRAMEWORK

There are four types of award in the National Framework of Qualifications:

- Major Awards are the principal class of awards made at a level
- Minor Awards are for part of completion of the outcomes for a Major Award
- Supplement of Awards are for learning that is additional to a Major Award
- Special Purpose Awards are for relatively narrow or purpose specific achievement

HETAC

HETAC (Higher Education and Training Awards Council) awards qualifications at all levels of higher education and training up to PhD level.

HETAC's main functions include:

- Setting standards for higher education and training awards
- Validation of higher education and training programmes
- Monitoring of institutional quality assurance procedures
- Delegation of awarding powers to recognised institutions
- Ensuring that student assessment procedures are fair and consistent
- Ensuring that arrangements are in place in commercial education and training institutions to protect learners where programmes validated by HETAC cease to be provided.

Portobello institute has recently been awarded HETAC Academic Council approval for its HETAC Level 6 Higher Certificate in Arts in Montessori Education. This represents a huge step forward for us as we endeavor to establish ourselves as Ireland's leading Montessori & Childcare education provider. For further details on this course please see page 6.



G What our Students Say



Joanne Larby – Montessori Teaching

I trained as a Make-up artist and worked in various department stores but I didn't really feel retail was for me. I always wanted to work with children so I decided to go back to college to do teaching. I found the course thoroughly enjoyable, the content was superb and extremely interesting. I found the workload manageable yet very challenging and time consuming in a positive way. I became engrossed in the work and Montessori as a way of life. I found my tutor extremely approachable, helpful and knowledgeable and it was clear from the first class that the area meant a lot to her and her enthusiasm and personal interest in the area was motivating. I was very lucky to have been offered a position within my work placement. Every day I come home with a smile on my face, something makes you laugh, self reflect, adapt, improve, and enhance yourself or a child. I don't for one second look back on my career change and decision to attend Portobello to study Montessori teaching.

Karen Neill, Montessori.

"Learning about the unique materials and witnessing the benefits each one brings to the child is so rewarding and was something I personally felt everyone should know about".

Eddie Dempsey, Special Needs Ed.


"I really enjoyed everything about the Special Needs Course. The tutor was very friendly and approachable, very knowledgeable and informative. I feel I learned an awful lot of useful and practical skills and as a result I am confident in my ability now. I would highly recommend Portobello Institute to any students thinking of completing any of their Special Needs Courses".

Sarah Quigley-Burns, Montessori

Sarah Quigley-Burns, last years Student of the Year, had been a stay at home mother since the birth of her 2 children and completing a Degree in Psychology in 2002. As her children began to develop she decided to undertake a part-time course in Montessori Teaching with Portobello Institute in Letterkenny. Soon after enrolling Sarah became pregnant for the third time and considered putting off the course for another year just as it begun. However she persevered and gave birth 10 days after completing her final written exam as part of her Diploma in Montessori Teaching. The course ignited her passion for working with children and to top off a hectic year, between study, looking after her two children and giving birth to her third child, Sarah decided to open her own Montessori School, Little Acorns in Cardonagh, Co. Donegal. Since opening in September Little Acorns has gone from strength to strength and Sarah is extremely happy in her new profession. Sarah was full of praise for the course and the "fantastic approach" and "wealth of knowledge" of her tutor.



The convenience of attending a local class with local tutors was also of great appeal to Sarah as was the prospect of attaining a professional qualification. She would "highly, highly, recommend" our Montessori teaching courses to anyone with an interest in children, from parents to people looking for a career change or those rejoining the workforce.



Sumreem Pasha was a stay at home mother looking after her young family when she decided to do a part-time course in order to better enable her to ensure the best possible development of her own children. A friend recommend the FETAC approved courses of Portobello Institute and she soon enrolled.

Sumreem is now an enthusiastic advocate of the methods used by Portobello Institute and in particular the knowledge and expertise of it tutors. She is eager to point out that the practical experience of the schools tutors were invaluable in helping her set up her own Montessori school.

She now owns and operates her own school in Clonsilla and hopes to expand the business into a full day-care centre in the near future.

Sumreem Pasha

M Higher Certificate in Arts in Montessori Education

Full Time Course

Montessori Education is enjoying a revival. The need to set limits and guide children's behaviour towards a self-discipline is openly sought. This idea is central to Montessori's philosophy.

In light of recent developments in the childcare sector new guidelines regarding qualification requirements for participation in the Free Preschool Scheme require that in addition to meeting the requirements regarding staff ratios, as provided for under

the Child Care Regulations, the pre-school year Leader must hold a certification for a Major Award in childcare/early education at a minimum of Level 5 (Level 6 by 2012) on the National Framework of Qualifications of Ireland (NFQ) or an equivalent recognised qualification in the childcare/early education field. It is for this reason that Portobello Institute are currently working on introducing this all encompassing course- to give students the necessary qualifications to work in the Montessori environment.

This course prepares adults for the task of helping children aged 3-6 and 6-9 years to develop to the fullness of their individual human potential. The course provides an opportunity to study, in depth, Montessori pedagogy, practices and child development as well as interdisciplinary approach to the study of man, his endeavours and his relationship with the universe.

This course will provide learners with the relevant knowledge and skills to empower them to make a significant contribution within the Montessori sector.

Awards:

- Higher Certificate in Arts in Montessori Education

Entry requirements:

Academically learners will need to have had attained a Leaving Certificate or equivalent with a minimum of 6 Passes, including 2 Higher Level Subjects, preferably English and one other.

Admission may be granted to mature students although not academically qualified who are deemed to have appropriate life experience. This learner will be expected to present documented evidence of experience to date and a place will be determined based on the portfolio presented and will be followed up with an interview.



Mature applicants will be required to be 23 years or older on the date of commencement of the programme. This participant / mature learner will already have some experience and will be able to integrate and apply the learning they gain in their workplace or other experiential context.

Alternatively students who have attained the current 6 component certificates at FETAC Level 6 on the National Framework of Qualifications will be eligible to participate in this programme. These candidates will be eligible to have their prior learning recognised. The Institute will implement an add-on course that will combine and allow students to attain the standards of knowledge, skill and competence that have been determined for the award to which the programme is intended to lead.

Course Structure:

This is a 2 year full time course. The year is structured between classes and practical placements.

Course Content

During Year 1 learner's will cover the following areas:

Module 1: Montessori Philosophy and Methodologies (A)

This module is broken into two parts;

Part 1: Practical Life

This will give learners the skills to prepare, demonstrate and guide a child through the learning process of every day life, such as bucking their shoes to pouring and spooning.

Part 2: Sensorial Development

This allows learners to lay the foundations for academic learning by developing and refining children's senses through sensorial equipment.

Module 2: Montessori Philosophy and Methodologies (B)

This module is broken down into 3 parts;

Part 1: Language

Learners will learn how to guide a child through the complexities of reading and writing to the excitement of when a child discovers they can put their thoughts down on paper.

Part 2: Maths

Learners will learn though using a variety of Montessori apparatus how not only to teach a child to calculate but also to give them a lifelong understanding of how numbers function.

Part 3: Culture

Learners will be introduced to the materials and activities that will help them guide children to gain an appreciation of the world we live in.

Module 3: Irish: Gaeilge

Learners will be introduced to the basics of the Irish language and its importance within the Irish culture.

Module 4: Montessori Practicum and Classroom Management

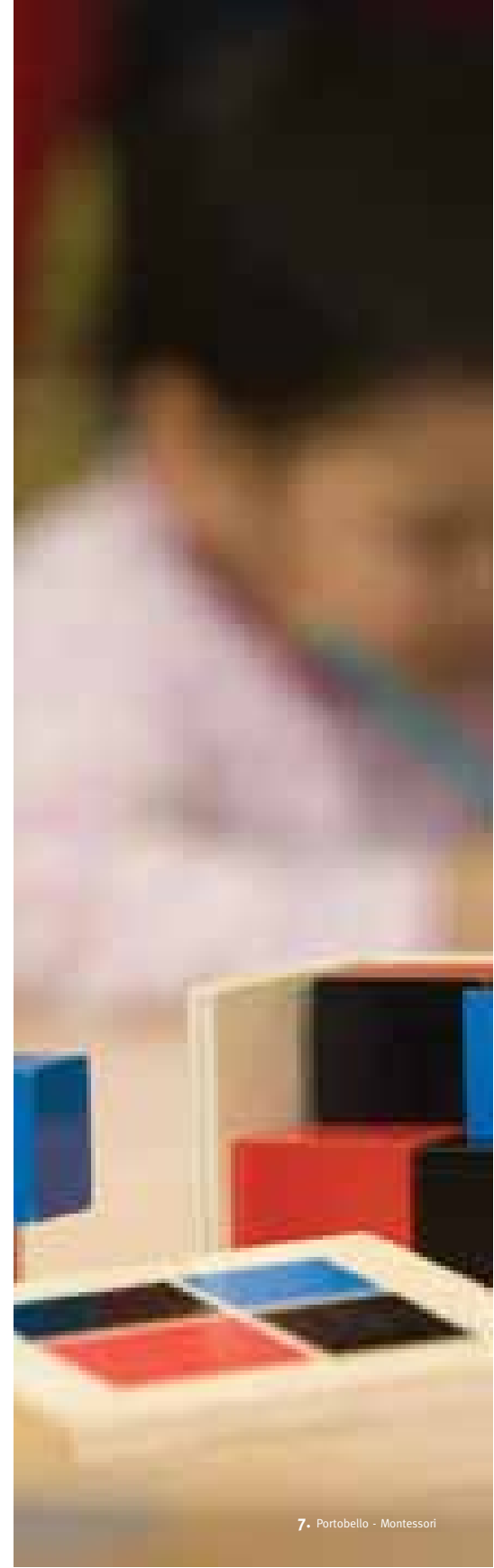
Learners will be able to discuss relevant classroom management policies and procedures and promote the benefits of a Montessori education to the general public. Practicum also allows the learner an opportunity to put into practise Aistear's themes.

Module 5: Special Needs Education

Learners will have an increased awareness and knowledge with regard to teaching and theories, methods and approaches as well as equipment for those with special educational needs.

Module 6: Creative Arts

Learners will understand the value of exploring creative arts activities in the physical, intellectual, social, emotional and linguistic development of children age 0 - 6 years.



During Year 2 learners will cover the following areas:

Module 1: Montessori Philosophy and Child Development

Learners will come to understand the history of Maria Montessori and her philosophy and reasoning behind “Learning by Doing”. The module is also designed to provide the learner with an introduction to the theory and practice of child development from 6-12 years.

Module 2: Montessori Methodologies (2)

This module is broken down into three parts;

Part 1: Maths

Learners will develop teaching styles and methods that will make mathematics an enjoyable experience. They will be able to apply knowledge and understanding to address familiar problems in forming mathematical concepts.

Part 2: Language

Learners will explore theory and understanding of the terminology, vocabulary and grammar exercises and recognition of how language development functions interrelate and are integrated.

Part 3: Culture

Learners will gain a knowledge and understanding of the cosmic relationship and connection between cultural subjects such as Geography, History and Biology, Botany and Zoology.

Module 3: Montessori Practicum (2)

Learners will explore the ability to select and apply appropriate teaching skills, styles and methods, expressing creativity and construction of new knowledge and artifacts using Information Communication Technology.

Module 4: Irish: Gaeilge

Learners will be able to prepare the child for Gaeilge in the primary school and curriculum which integrates the four strands of éisteacht, labhairt, léitheoireacht and scríbhneoireacht. (listening, speaking, reading and writing).

Module 5: Children’s Health Education

Learners will explore theory and understanding of health implications and benefits of exercise in children.

Assessment Criteria:

There will be a written assessment (case studies, reports and research projects), practical skills demonstrations, reflective activities and also modular written terminal examinations.

Career Opportunities:

Upon successful completion of this course learners will qualify to work as:

- Montessori Teachers
- Montessori Classroom Assistants
- Self employed with their own Montessori Pre-School
- Special Needs Assistant in a pre-school, crèche or in a Montessori school working with children with additional support needs, or supporting people in a range or community, residential, private and/or charity settings.

Further Study:

Year 3 of this programme which will lead to Level 7 Ordinary Degree in Arts in Montessori Teaching is currently being developed. Please contact us for further information on this or refer to our website www.portobelloinstitute.ie for accreditation updates.

Síolta.

Síolta was developed and published in 2006 by the Centre for Early Childhood Development and Education (CECDE) on behalf of the Department of Education and Science. It is a quality assurance process which addresses all aspects of practice in early childhood care and education services. It is designed to support practitioners to develop high quality services for children aged birth to six years and is relevant to all setting where children spend time out of their home environment. These individuals will be appropriately qualified, mentored and guided and have significant experience in delivering ECCE service to children and families. Early childhood, the period from birth to six years, is a significant and

unique time in the life of every individual. Every child needs and has the right to positive experiences in early childhood. As with every other phase in life, positive supports and adequate resources are necessary to make the most of this period.


Aistear.

Aistear is the Framework for Early Learning and supports practitioners in planning for and providing enriching, challenging and enjoyable learning opportunities for children from birth to six years. It can be used in different types of settings including children’s homes, childminding settings, full and part-time daycare, sessional services and infant classrooms. Developed by the National Council for Curriculum and Assessment (NCCA) with practitioners, children, parents, researchers, those working in training and professional development, and in the government departments concerned with the early years, Aistear reflects key research messages on early childhood learning and takes account of early childhood in Ireland. The aim of the Framework is to help every child to grow and develop as a competent and confident learner within loving and nurturing relationships with adults and peers.

Montessori , Síolta and Aistear.

This programme aims to develop in our students the highest level of professional competence as practitioners of the Montessori Method of education and to establish in them a wide knowledge and a deep understanding of educational practices in conjunction with the principles set down by Síolta and Aistear.

This combination of quality pedagogical training endeavors to provide enriching, challenging and enjoyable learning opportunities for children.



Lorraine Duane

My name is Lorraine Duane and I am a mum to a 4 and a half year old girl Leah. My life before by daughter was fast paced Marketing in the Travel Industry for 13 years. It was when I had my daughter that my priorities changed and the realisation of what's important in life really set in.

As a parent you have a huge role to play and you are the blue print to this little life that has been given to you and my aim in life is to give my child the best. I wanted to be a great parent but I found no matter how many books I read nothing was feeding my child the stimulation she needed. I decided to check out local Montessori schools and I found an excellent one in Co Kildare.

It was through a friend of mine that I heard of Portobello Institute and their Montessori Courses. To say it has changed my attitude to learning is an understatement. I can not believe how flippant the Educational system is when you see the research and the results of Maria Montessori work.

Children are little adults they can consume so much more information than we give them credit for - to think that children have an Absorbent Mind and the material that Maria Montessori made is just genius. I found that each of the Modules opened my eyes to how to teach your child. Its not about telling them what to do it's about allowing them show you how to teach them.

I loved the course in Portobello Institute and I know now I was born to be a Montessori Teacher. The course is pretty intense but it is so informative and fulfilling. The tutor was so patient with all of us in her class as we all came from different back grounds. I feel there is huge potential for this course to be taught to parents as I feel from my work experience a lot of parents hand their responsibility over to the teacher when in fact the parent has 99.9% responsibility of teaching their child.

I can not recommend this course enough and everyone I am meeting I am telling them as a parent they need to do it. If I was given the opportunity as a child to attend a Montessori School I would have loved the educational system.



M

Maria Montessori Method of Teaching (Age Range 3-6 years)

Part Time Course

If you hold an interest in the Maria Montessori method of education but due to commitments you cannot study full time, Portobello Institute has designed and delivered this comprehensive part time course for over fifteen years. The course concentrates specifically on catering for the part-time students who wishes to study the Montessori method for the 3-6 year age group. Following this course you will gain a full understanding of the principles of Montessori Teaching methods and this is further heightened with the combination of theory and a 50 hour teaching practice programme.

On successful completion of this course you will be eligible to join the thousands of Portobello Institute graduates who now work as Montessori teachers with the 3-6 yr age group and also to join the many successful graduates who have opened their own Montessori school for this age group.

Note: For the purpose of the ECCE Scheme learners should also complete the Advanced Supervision in Childcare Course to gain their Major Award. (see page 13 for details on this course)

Awards:

- FETAC Level 6 Component Certificate in the following 6 modules:
 - Educational Philosophy
 - Practical life
 - Sensorial development
 - Language
 - Mathematics
 - Culture

Entry Requirements:

Entry to this course is by direct application. You are invited to contact the course co-ordinator to discuss the course and career options prior to submitting your application-this is optional.

Structure:

This course is delivered over 1 academic year. Classes are split between practical and theory training, with time spent learning the theory and practising the Montessori presentation skills. Students will also need to complete a work experience programme of 50 hours for this course.

Course Content

Module 1- Maria Montessori & Her Philosophy

During this module you will learn and come to understand the history of Maria Montessori and her philosophy and reasoning behind “Learning by Doing”.

Module 2- Practical Life

This module will give you the skills to prepare, demonstrate and guide a child through the learning process of every day skills, such as buckling their shoes to pouring and spooning.

Module 3- Sensorial Development

The sensorial equipment designed to compliment this module will teach you how to lay the foundations for academic learning by developing and refining their senses.

Module 4- Language

You will learn how to guide a child through the complexities of reading and writing to the excitement of when a child discovers they can put their thoughts down on paper.

Module 5- Mathematics

In this module you will learn through using a variety of Montessori apparatus how to not only teach a child to calculate but also to give them a lifelong understanding of how numbers function.

Module 6- Culture

During this module, you will be introduced to the materials and activities that will help you guide children to gain an appreciation of the world we live in.

Module 7- Work Placement Programme

During the placement programme of 50 hours, you will have the opportunity to put into practice the exercises and skills you will have learned during the course.

Assessment Criteria:

Collection of work (Montessori Files), Practical Skills Demonstration, Modular Exams

Pass Rate:

The college holds an average of 95% pass rate off this course.

For career opportunities
see page 3

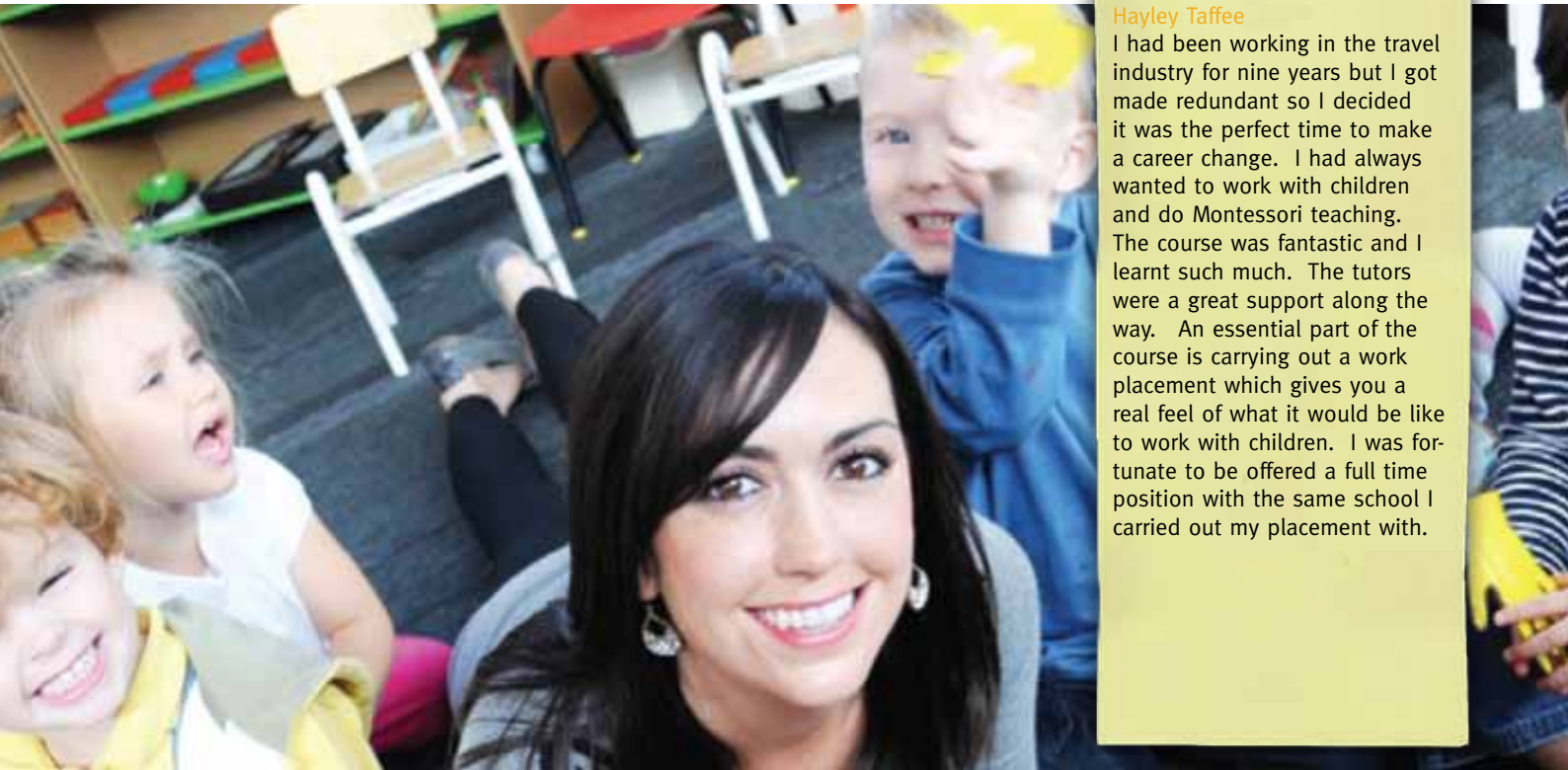
For funding available
see page 3

For franchise opportunities
see page 3

For workshop courses
see page 25-26

For accreditation
details see page 4

For open day/evening
information go to
www.portobelloinstitute.ie



Hayley Taffee

I had been working in the travel industry for nine years but I got made redundant so I decided it was the perfect time to make a career change. I had always wanted to work with children and do Montessori teaching. The course was fantastic and I learnt such much. The tutors were a great support along the way. An essential part of the course is carrying out a work placement which gives you a real feel of what it would be like to work with children. I was fortunate to be offered a full time position with the same school I carried out my placement with.



M

Certificate in Montessori Philosophy

Part-Time Course

This course aims to introduce the learner to the inspiring philosophy behind a Montessori education. It will offer the learner the opportunity to understand and appreciate the historical background to the origin and theory associated with the Montessori Method of Education. The course is ideally suited for anybody working in a pre-school or early years setting with young children.

Award:

- FETAC Level 6 Component Certificate in Early Learning Philosophy

Entry requirements:

Entry onto this course is by direct application.

Course Structure:

This course is delivered 1 evening per week over 18 weeks.

Course Content:

During the course learners will cover the following areas;

- Montessori Philosophy
During this module learners will come to understand the history of Maria Montessori and her philosophy and reasoning behind “Learning by Doing”.

Assessment Criteria:

One written assignment and exam will be required to successfully complete this course.

Further Study:

This course will equip the learner with the knowledge base required to further their studies of Montessori Education. Learners may wish to progress to study the Montessori Teaching Diploma course offered by Portobello Institute. See page 10 for details.



M

Advanced Supervision in Childcare

Part-Time Course

Advanced Supervision in Childcare is currently the qualification requirement as set down recently by the Office for Minister for Children (OMC) for those seeking to avail of the grants for Early Childhood Education in pre-schools.

This course will provide the learner with the necessary skills and knowledge to appreciate the needs of children in a holistic way, examining all areas of development, including their physical, social, emotional, cognitive, spiritual, language and creative needs. This exciting programme will encourage best practice in communication skills, understanding current legislation, appreciation of children's relationships both within the family and society and increase the learner's understanding of the necessity for personal and

professional development. This is essentially a programme for those who wish to gain a nationally accredited award as a Childcare Supervisor.

Awards:

- FETAC Level 6 Advanced Certificate in Supervision Childcare Major Award (DCXXX)

Course Structure:

This course is delivered in two ways:

Full Major Award: 1 evening per week for 32 weeks*

Upskill Award: studied over 8 Saturdays or as per our schedule**

* **Full Major Award:** the full 4 Mandatory Modules of the course are studied, plus an additional elective module.

****Upskill Award:** if this course is studied as an additional programme (to the FETAC Montessori Course) it can be studied over the reduced period such as 8 Saturdays (or as per our schedule) This is due to the overlap of content between the two programmes.

Note: The FETAC Montessori Philosophy Component Certificate is also an approved elective module.

Entry Requirements:

There are no previous formal academic requirements for this course if completing the Full Award i.e in 32 weeks.

Course Content:

There are four mandatory modules and one elective module to be completed.

1. Child Development
 2. Early Childhood Programmes
 3. Social and Legal Issues in Childcare
 4. Supervision in Childcare
- Elective Module: Communications

Note: There is a list of approved elective modules available on the FETAC website and holders of any of these are not required to complete the Communications Module or attend these lectures. Special Needs Level 6 and /or any of the Montessori Modules are approved elective modules.

Assessment:

Modular Assignments

Note: For students who wish to study the above modules separately- this can be done through our Distance Learning programmes. Please see our website for further details on this.



M

Early Childhood Care and Education Scheme (ECCE Scheme)

Part-Time Course

In April 2009 the government announced a new scheme to provide one free Pre-school year in early childhood care and education. This scheme is eligible for children between the ages of 3 years and 3 months and 4 years and 6 months on the 1st of September each year.

Under the terms of this scheme Pre-school Leaders must hold a Major Award in childcare at a minimum of Level 5 on the National Framework of Qualifications. Pre-school Leaders will be required to hold a Major Award in childcare at a minimum of Level 6 on the National Framework of Qualifications by January 2012.

As a result of this scheme some issues in the workplace have arisen for our past students both Pre and Post FETAC Accreditation.

In response to these issues Portobello Institute have been working in conjunction with FETAC and have developed two paths which will help our students

to comply with the requirements that the government scheme now requires.

Path 1: For Portobello Institute's past Montessori students who have trained pre FETAC Accreditation.

Step 1: To complete a Conversion Course* that will bring up to date their qualification in order to gain the current 6 FETAC Component Certificate Accreditation on each on the Mandatory Montessori Modules.

Step 2: On completion of Step 1, to study The Advanced Supervision in Childcare course Upskill Programme. (see p 13 for details on this programme)

Path 2: For Portobello Institutes past students who hold the 6 FETAC Level 6 Component Certificates with their Portobello Montessori teaching Diploma.

Step 1: Advanced Supervision in Childcare Upskill Programme (see p13 for details on this programme)

*This conversion course is only available to past Montessori teaching Diploma students. This programme refreshes the philosophy and the skills demonstrations in each of the Montessori modules for the 3 to 6 year old child. It is an intensive week of workshops whereby the students will meet the same assessment criteria, assignments and exams as our current students.

On completion of Path 1 and 2 students will receive A full Major Award at FETAC Level 6 in Advanced Supervision in Childcare with the following modules listed.

- Montessori Methodologies Level 6
- Child development Level 6
- Early Childhood programmes Level 6
- Supervision in Childcare Level 6
- Social and legal issues in Childcare Level 6

Along with holding their Portobello Institute Montessori teaching Diploma for 3 to 6 years.

**For career opportunities
see page 3**

**For funding available
see page 3**

**For franchise opportunities
see page 3**

**For workshop courses
see page 25-26**

**For accreditation
details see page 4**

**For open day/evening
information go to
www.portobelloinstitute.ie**

Tutor Profile - Tracey Maree

After graduating in 1995 in both Montessori Pre-Primary and Primary School Teaching Tracey set out to work abroad, eventually setting up and directing a Montessori school in Singapore. The successful Brighton Montessori continues today with the expansion of branches all over Singapore.

Tracy began teaching Montessori on a part-time basis with Portobello in 1998, in 2004 she made a change from working with Primary school children to Full Time students at Third Level education and took up the position of Montessori Director for the 3-6 Pre-Primary Course directing and co-ordinating the Montessori course nationwide.

In 2005 she wrote the LDM's (Locally Devised Modules) which gained FETAC accreditation for the course. Since Jan 2007 Tracey has moved into the field of research and created the submission document that was presented and approved by HETAC.

Tracey's experience and vast knowledge is invaluable to the college and its students.



Photography by Paul Sherwood

M

Certificate in Childcare DCHSC

Full Time Course

This course is designed to equip the learner with the skills and knowledge to care for children from 0-6 years either in the home or working in a day care nursery, crèche, pre-school/after school facility or as a professional nanny. It promotes best practice in childcare and highlights the importance of maintaining a healthy, hygienic and safe environment for children. There is a requirement that students undertake 50 hours work experience as part of the course. The work experience programme promotes the ability of students to work effectively in childcare settings and integrate all elements of practice within a coherent framework.

Entry Requirements

Entry to this course is by direct application to the college. Acceptance to the course is interview-based. There is no specific points requirement.

Course Structure

This is a full time programme delivered over 1 academic year.

Awards

- FETAC Level 5 Major Award, Certificate in Childcare DCHSC

Course Content

During this course learners will cover the following modules:

- Child Development
- Early Childhood Education
- Working in Childcare
- Caring for Children 0-6
- Work Experience
- Communications
- Human Growth & Development
- Art and Craft for Childcare

Assessment

Assessment for this course is based on a combination of:

- Portfolio
- Practical Examination
- Continuous Assessment
- Assignments
- Examination
- Project

Progression

As part of the Higher Education Links Scheme, graduates are eligible for consideration for academic routes in the Universities and Institutes of Technology of Ireland. For further information please see the courses and criteria listed under the Higher Education Links Scheme on the FETAC website: www.fetac.ie or on the FETAC section of the CAO website: www.cao.ie

From this course graduates can progress to*:

- Early Childhood Studies (level 8) Waterford Institute of Technology
- Early Childhood Care & Education (level 7) Cork Institute of Technology
- Early Childhood Care & Education (level 7) Blanchardstown Institute of Technology
- Applied Social Studies in Social Care (level 7) Blanchardstown Institute of Technology
- Social Care (level 8) Dundalk Institute of Technology
- Community & Youthwork (level 8) NUI Maynooth

*All progression routes are subject to certain academic prerequisites set out by the relevant 3rd level institutions.

Career Opportunities

Upon completion of this course, graduates can pursue possible careers in:

- Day Care Nursery
- Crèche
- Pre School / After School for Children
- With families as a Professional Nanny

For career opportunities see page 3

For funding available see page 3

For franchise opportunities see page 3

For workshop courses see page 25-26

For accreditation details see page 4

For open day/evening information go to www.portobelloinstitute.ie




After working in Project Management for a number of years, Lynsey McCabe wanted a new challenge in a career that would give her more job satisfaction than she was getting. Having always wanted to work with children she decided to take the first step and sign up to one of our FETAC accredited Childcare courses.

Lynsey described the course as “brilliant” and was amazed by the enthusiasm of tutors who were always willing to go that extra mile to assist their students with any queries on issues ranging from child nutrition to the legal and tax issues associated with setting up their own Montessori school.

Lynsey is currently working as a Montessori teacher and has recently opened her own Montessori school, in Kinsealy, Dublin.

Lynsey McCabe



Tanya Heffernan from Navan was full of praise for the advice and knowledge she received at the hands of Portobello Institute after completing her FETAC level 5 course in Special Needs Education. She describes the course as being “packed with helpful information about how to manage behavioural issues effectively and also the different stages of development”. Receiving a Distinction, Tanya puts her result down to her own hard work plus the dedication and encouragement of her tutor. Always on hand to provide advice and assistance to her students in any way possible while at the same time equipping her students with the practical as well as academic knowledge necessary to effectively work with people with special needs.

Tanya absolutely loves her new job as a SNA and is also in the process of completing her FETAC level 6 with Portobello Institute. She would thoroughly recommend the course to anyone with an interest in the area and comments that “this course will not only benefit the student but more importantly the children they will go on to work with”.

Tanya Heffernan

M Special Needs Education DSACX

Full Time Course

Childcare professionals provide basic personal care and social care to children in a number of settings, including crèches, special schools, day centres, activity camps and residential homes. They support children with practical everyday tasks, as well as encouraging their personal and social development. This course is designed to introduce learners to the key areas of caring for children of a school going age and promotes their understanding of the underpinning theoretical framework of childcare principles and practice.

Students gain a comprehensive understanding of the stages of child development in terms of physical, mental and emotional wellbeing. The learner is equipped with the skills and knowledge to support the health, safety and nutritional needs of the older child and adolescent. They gain an understanding of the responsibilities in caring for the older child and adolescent in relation to child protection.

Contributing to the learning of the child is central to this programme and students develop the skills and knowledge to plan, implement and evaluate school age childcare programmes to provide opportunities for education, play, recreation and rest. They will also learn how to integrate children with special needs into these activities. The learner will develop the skills, knowledge and attitudes necessary to work with children who have additional needs, and support their inclusion and integration in an early childhood care and education service. They will understand the importance of inclusive practice within the early childhood service in supporting all children’s development, recognise the characteristics of a wide range of learning difficulties and conditions and appreciate the range of skills and knowledge necessary to work with, and support, children and families with additional needs. There is a requirement that students undertake 50 hours work experience as part of the programme. Learners develop core skills in

childcare practice. It promotes the ability of students to work effectively in childcare settings and integrate all elements of practice within a coherent framework.

Entry Requirements

Entry to this course is by direct application to the college. Acceptance to the course is interview-based. There is no specific points requirement.

Course Structure

This is a full time programme delivered over one year.

Award

- FETAC Level 5 Major Award, Certificate in School Age Childcare DSACX

Course Content

During this course learners will cover the following modules:

- Communications
- Child and adolescent development
- Health awareness
- School age childcare
- Work Experience
- Integrating children with additional needs
- Special needs assisting
- Understanding special needs

Assessment

Assessment for this course is based on a combination of:
Portfolio/Practical Examination/Continuous Assessment/Assignments/Examination/Project

Progression

As part of the Higher Education Links Scheme, graduates are eligible for consideration for academic routes in the Universities and Institutes of Technology of Ireland. For further information please see the courses and criteria listed under the Higher Education Links Scheme on the FETAC website: www.fetac.ie or on the FETAC section of the CAO website: www.cao.ie

From this course graduates can progress to*:

Early Childhood Studies (level 8)
Waterford Institute of Technology

Early Childhood Care & Education (level 7) Cork Institute of Technology

Early Childhood Care & Education (level 7) Blanchardstown Institute of Technology

Applied Social Studies in Social Care (level 7) Blanchardstown Institute of Technology

Social Care (level 8) Dundalk Institute of Technology

Community & Youthwork (level 8) NUI Maynooth

*All progression routes are subject to certain academic prerequisites set out by the relevant 3rd level institutions.

Career Opportunities

Upon completion of this course, graduates can pursue possible careers as a Special Needs Assistant in a pre-school, crèche, primary school or in a montessori school working with a child with additional special needs.



For career opportunities see page 3

For funding available see page 3

For franchise opportunities see page 3

For workshop courses see page 25-26

For accreditation details see page 4

For open day/evening information go to www.portobelloinstitute.ie

Tutor Profile - Liza Santoro

Liza has been teaching with Portobello for nearly three years. She has been working in the area of special needs for thirteen years, originally coming from a speech and language therapy background working in England for many years before moving home. She has trained in PECs, Teacch. and ABA, and worked with various client groups, including head injury patients, stroke patients, children on the ASD spectrum, children with ADHD, Learning difficulties, Language delay and many more.

Liza considers herself to be extremely lucky to be doing a job she loves and this enthusiasm comes across in everyone of her classes.



Photography by Paul Sherwood

M Special Needs Education Level 5

Part Time Course

Portobello Institute offers a Special Needs Education Certificate course on a Part Time basis. This course is suited to anyone who has an interest in Special Needs Education, whether to pursue it as a career or use the knowledge for personal reasons.

The field of Special Needs Education is one of enormous variety and ever changing needs. Portobello Institute wish to respond to the true needs within the sector by offering a course that will equip our students not only with knowledge but with empathy and understanding crucial to their future role as advocate and companion to persons needing assistance in their education. Our research in the field has found that Special Needs Assistants require practical skills and knowledge in a wide range of behaviours and abilities. Thus, we try to encapsulate the lifelong experience of persons with Special Needs within our courses, in Level 5 and in greater detail at Level 6.

This Part Time course is delivered one night a week for 16 weeks and on successful completion graduates will receive 2 FETAC Level 5 Certificate of Competency Awards. These awards are recognised by the National Framework for Qualifications. The qualification will enable you to work with both children and adults with Special Needs, either in the home or in an educational setting.

This course is open to people of all ages and nationalities and no previous experience is necessary to enrol in the course. This course is held in many regional centres around Ireland through Portobello Institute. Please contact us to see if there is a course centre located near you.

Awards:

- FETAC Level 5 Component Certificate in Understanding Special Needs
- FETAC Level 5 Component Certificate in Special Needs Assisting

Structure:

This course is delivered 1 night a week for 16 weeks. This course also requires you to complete a work experience programme of 20 hours which will be evaluated.

Entry Requirements:

Entry to this course is by direct application. You are invited to contact the course co-ordinator of this course to discuss the course and career options prior to submitting your application. There are no academic

Tutor Profile - Liz Doyle

Liz Doyle has been teaching Portobello Institute's Special Needs Education FETAC Level 5 and 6 courses in Drogheda and with each new class is consistently surprised at how satisfying the experience can be.

With a BA in Training & Education, a National Certificate in Training (Special Needs) and with almost 20 years experience working with people with additional needs, Liz is full of the essential practical knowledge required to guide others seeking careers as special needs assistants.

requirements to study this course, however, in order to work as an SNA you will need to have acquired a minimum of an ordinary Leaving Certificate level or equivalent in the English language. Some basic IT skills are also required.

Course Content:

During this 16 week course learners will cover the following topics:

- The role and responsibility of an SNA
- Learning and how learning happens
- Understanding education practices
- Education/ personal planning
- Roles and responsibilities within organisations
- Understanding policy and legislation
- Disability awareness; looking into the range of issues
- Language and labelling theories
- How to be an effective communicator
- Understanding behaviours
- Work placement



Photography by Paul Shewood

M

Special Needs Education Level 6

Part Time Course

Continual training, upskilling and personal development are key to those working within the field of Special Needs. This enhancement is in order to meet the constantly changing and demanding needs of this area.

Following research in the industry we have noted that continued training and development opportunities are not available for Special Needs Assistants in Ireland. We have introduced this extensive course in order to extend the knowledge and training of those already working within this rewarding industry.

The course is designed as a progression route from level five or as an enhancement to other programmes of study related to special needs. The course is structured to give a broader insight, knowledge and understanding of the issues surrounding disabilities and or learning difficulties. The course will enable students to analysis,

research and critically review a range of issues, in particular, issues which are of great interest to themselves. The course is intended to up skill existing practitioners and to enable people to explore areas for further learning. For example at a higher level, onto University degrees or special resource teaching.

Successful graduates of this course will be awarded a FETAC Level 6 Component Certificate in Special Needs Assistant, recognised by the National Framework of Qualifications. On completion of the course, graduates can work in a range of educational establishments public and private, from pre-school to higher education in community and home environments.

Awards:

- FETAC Level 6 Component Certificate in Special Needs Assistant

Entry Requirements:

Pre-Requisites:

You must have successfully completed the FETAC Level 5 Certificate in Special Needs Education with Portobello Institute or hold an equivalent qualification. Applicants are invited to discuss eligibility with the course coordinator.

Structure:

This course is delivered over 10 weeks. It is also a requirement that students undertake work experience to enhance their area of learning. This is to be negotiated with tutor on an individual basis, dependant on

experience and background. You will keep a record of this experience to reflect, evaluate and analyse in relation to the course work.

Course Content:

During the course you will be introduced to and learn the practical application of the following areas.

- Historical developments
- Policy and legislation
- Disability awareness and understanding
- Specialised areas of interest
- Good practice
- Theories of learning and intelligence
- Curriculum issues
- Observations, IEPs, Statements
- Adaptation and modification
- Learning aids and resources
- Nutritional considerations
- International perspectives
- Planning and Preparing visual art/drama activities

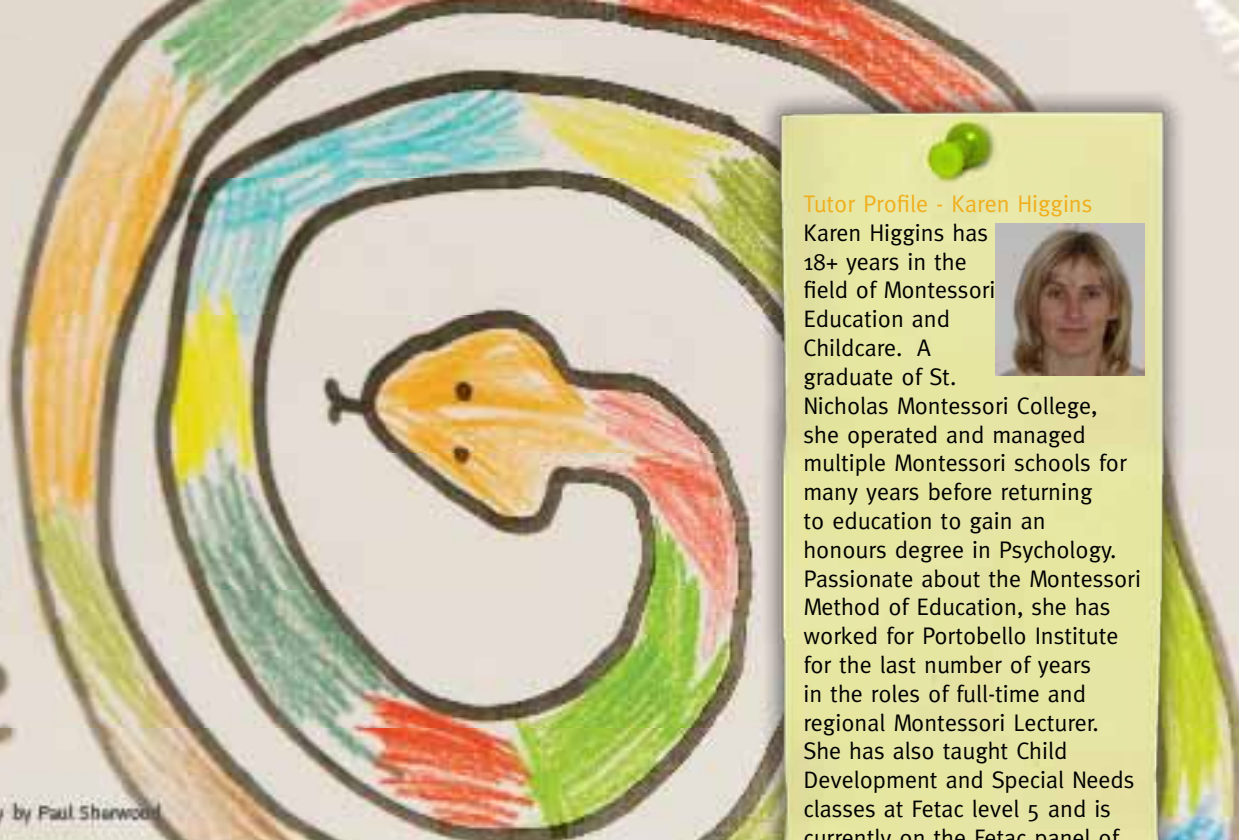
Work Placement Requirements

During the course you are required to complete a work placement programme. This will give you the opportunity to put into practice the exercises and skills you have learned. It is also an opportunity to observe, reflect and evaluate your own practises.

Assessment Criteria:

Project, assessment of practical skills and portfolio work.

s
n
a
k
e



Students Work. Photography by Paul Sherwood

Tutor Profile - Karen Higgins

Karen Higgins has 18+ years in the field of Montessori Education and Childcare. A graduate of St. Nicholas Montessori College, she operated and managed multiple Montessori schools for many years before returning to education to gain an honours degree in Psychology. Passionate about the Montessori Method of Education, she has worked for Portobello Institute for the last number of years in the roles of full-time and regional Montessori Lecturer. She has also taught Child Development and Special Needs classes at Fetac level 5 and is currently on the Fetac panel of external authenticators.



M

Certificate in Child Development Level 5

Part Time Course

Understanding a child's social, emotional and physical development is paramount if one is to provide a caring and nurturing environment for children to develop in. This course covers the individual variation in stages of development, the factors

that can affect it and the role you can play in promoting child development.

Award:

- FETAC Level 5 Component Certificate in Child Development

Entry Requirements:

Entry to this course is by direct application.

Course Structure:

This course is delivered 1 evening per week for 16 weeks.

Course Content:

During this course, learners will cover the following areas;

- Overview of child development
- Concept of normative development on children
- Individual variation in stages of development
- Influence of environmental, social and cultural factors

- Role of the childcare worker in promoting child development
- Physical development through play
- The different types and benefits of research
- Cognitive development
- Language, moral, social and emotional development
- Managing behaviour

Work placement requirements:

During the course you will be required to complete a work placement programme of 20 hours in a childcare setting.

Assessment Criteria:

One assignment and one written exam.

Further studies:

Graduates of this course may wish to progress to study one of the Maria Montessori Method of Teaching courses offered by Portobello Institute.



Students Work. Photography by Paul Sherwood

M

Certificate in Child Development Level 6

Part Time Course

This module is designed to provide the learner with an in-depth knowledge and understanding of child development from 0-6 years. It also aims to provide the student with the skills required to implement and promote the use of observations in the early childhood

education and care setting. This course aims to promote good practice, equality, and respect for diversity in early childhood education and care. It introduces the learner to the underlying psychology of the development of children – essentially why they do what they do.

Awards:

- FETAC Level 6 Component Certificate in Child Development

Entry Requirements:

Entry to this course is by direct application. Many of our students however would have first completed the Level 5 course in Child Development (see Page 22) before proceeding onto this course.

Course Structure:

This course is delivered over 1 evening per week for 18 weeks.

Course Content:

During this course the learner will cover the following areas;

- Overview of child development
- Physical Development
- Intellectual Development
- Language Development
- Social and emotional development
- Influencing children's development

Work experience:

During the course learners are required to complete 40 hours practical work experience in a childcare setting.

Assessment Criteria:

Assignments, assessment of practical skills.

Further Studies:

This course is one of the 4 core modules of the Advanced Certificate in Supervision in Childcare full major award. Students may wish to study the remaining core modules to gain the full award. (see page 13)



M

Child Psychology

Part Time Course

The purpose of this course is to introduce the students to the methods, language and practice of child psychology. It examines the core issues in relation to psychological development including language, thinking and socialisation with particular focus on the emergence of the child as an individual.

Award:

- FETAC Level 6 Component Certificate in Child Psychology

Entry requirements:

Entry onto this course is by direct application.

Course Structure:

This course is delivered 1 evening per week over 18 weeks.

Course Content:

During the course learners will cover the following areas;


- Overview of child psychology
- Learning and development
- The role of technology in child psychology and learning
- Development of self: transitions from childhood to adulthood

Assessment Criteria:

Two assignments and one project .

Further Study:

Graduates of this course may wish to progress to study on of the Maria Montessori Method of Teaching courses offered by the Portobello Institute.



Some students work from our Maria Montessori School. Photography by Paul Sherwood

W

- Paediatric First Aid
- Manual Handling
- Arts & Crafts Workshop
- Music and Dance
- Child Fitness Education
- Montessori Refresher Training Course
- Lámh

Workshop Courses

1) Paediatric First Aid

Structure:

This workshop is delivered over one full day. This paediatric first aid course is suitable for parents, grandparents and babysitters and is ideal for everyone working in or with a desire to work in a professional childcare environment. Upon completion of the workshop learners will receive a Certificate from the Irish Heart Foundation and the American Heart Association. Learners will also receive a Respond Training Paediatric Emergency 1st Aid Certificate.

Content:

This intensive day course will include a mixture of theoretical and practical modules.

- First Aid principles and equipment
- Child assessment
- Bleeding and wounds
- Child and infant CPR
- Obstruction airway management
- Rescue breathing
- Unconsciousness
- Burns and scalds
- Fractures and sprains
- Convulsions and medical emergencies

2) Manual Handling

Structure:

This additional workshop is delivered over 1 half day. To comply with current Health and Safety legislation, staff engaged in manual handling must be given training in safe lifting techniques. This training will show you how to lift correctly and therefore avoid back injuries. By training how to lift safely you will avoid serious and long-term back injury. During this half day course you will learn how to:

- Lift and handle loads safely
- Recognise a load that is too heavy or awkward.
- Understand the limitations of the spine and muscular system.

Content:

- Lifting to and from ground level
- Lifting to and from a height
- Pushing
- Pulling
- Lifting bags/sacks

This course combines lecture methods with “hands-on” practical work with the use of various types of materials and apparatus.

3) Arts & Crafts Workshop

Structure:

This additional workshop is delivered over one weekend. Unknown to many in the educational system, art and crafts are indirect preparations for a child’s development, learning and concentration. It is an excellent alternative to the traditional method of the teacher dictating and the child confined to listening. Nothing inspires the imagination quite like art. This additional programme aims to give you inspirational ideas that will assist you to unleash the child’s imagination in a world of hands –on discovery with painting, sculpting, drawing, collage, song, dress-up and other imaginative activities. The workshop will cover art and craft ideas for all the various occasions through out the year e.g. Mothers day, Fathers day, Easter, Christmas, Birthdays, Halloween etc.

4) Music and Dance

Structure:

This additional workshop is delivered over 2 days (weekend)

Music and dance is a fantastic way to get children active and creative. The use of various music and lyrics combines the development of physical and intellectual development. This additional workshop will demonstrate various exercises to help keep children entertained while also keeping fit and active. This is very beneficial when working with children that may not have regular exercise or unable to participate in school sports.

Music exploration:

Children at any age can't get enough music! Through rhythm, pitch and tempo children express their emerging musical knowledge. When we give children the opportunity to develop their singing voices, we enable the child's creative spirit to blossom through songs, musical movements, stories and improvising. Children begin to build a love and foundation of musical skills to grow on. This course will teach you ideal group songs, finger plays, instrumental and musical games and it will explain how instruments and musical games build both cognitive and social skills in children.

5) Child Fitness Education including Diet & Nutrition

Structure:

This programme looks at children's exercises through the 5 health – related components:

- Physical Fitness Cardio
- Strength
- Endurance
- Flexibility
- Body Composition

This workshop will aid learners to instruct children of all abilities to build strong bones, healthy bodies and minds and how to have a positive attitude towards physical exercise.

This programme will help you learn the fundamental, engaging activities that help children's cognitive, social and physical skills. This workshop will cover the following areas:

Children's yoga.

This is an interactive, creative way to introduce children to yoga and the importance of creating a lifelong habit of physical and mental well-being.

Balance techniques.

Activities that will focus on the balance of the child's body, their posture and their ability to balance objects. This helps build a child's confidence, concentration and movement.

Individual games

Physical activities that the child can do on their own. These activities aim to build self-confidence, boost independence, promote fitness and unleash the imagination.

Children's group activities.

Physical group activities that involves interaction, communication and team cooperation with peers. This is an excellent activity to include in any class that there may be a division in or segregation of a child/children.

Concentration building activities.

Sports activities that will involve, circuits, set patterns of play and building up the ability to following oral and written instruction for various tasks and exercises.

6) Montessori Refresher Training Course

Structure:

This workshop is held over 2 days (weekend)

This workshop is a unique opportunity for 'trained' Montessori teachers to refresh their knowledge of the Montessori

materials and principles behind the Montessori Method of teaching. You will also get the opportunity to upgrade your knowledge of current legislative changes. This is an intensive yet comprehensive and worthwhile means of refreshing and updating your existing skills in line with current demands.

Workshop Overview:

- The Montessori materials will be presented
- The prepared environment discussed
- Current legislation changes

Block bookings by companies is considered for this. On completion of the workshop you will receive a Portobello Institute Refresher Course Certificate.

Entry Requirement:

It is a requirement of this workshop that you hold a Montessori teaching qualification. Block bookings by companies is considered for any of our workshops. Please contact our dedicated customer service team for further details.

Lámh Course (St Michaels House sign language training)

Structure:

This workshop is delivered over one full day or three evenings (as per our schedule) This LAMH sign language course is suitable for practitioner's, parent's, grandparents ,everyone working in or with a desire to work in a professional childcare environment.

Content:

This intensive course is a sign language course developed by St Michael's House for children who they hope will eventually be able to speak. Learners will spend the workshops perfecting the signs and learning how best to introduce them to children. Learners will receive a book and pack with all of the signs detailed in it. Learners will receive a certificate of completion from St Michaels House.



P Portobello Institute working with Zest 4 Kidz

Portobello Institute are delighted to, once again this year, support Zest4Kidz as our chosen charity. Zest4Kidz are an Irish Registered Charity (CHY17374) who focus on giving care and attention to children who have had extremely difficult lives. They facilitate regular projects helping children in three main areas, Child Soldiers in Africa, Child Prostitutes in India, Children in Prisons and Orphanages in Eastern Europe. They also make it a priority to



give guidance and assistance to the carers of these children who are so often left to share in the trauma of their experiences.

Zest4Kidz send out professional teams of psychotherapists and coaches to work with the specific needs of children and staff alike to create a better atmosphere within these facilities and instil some hope in children who have had such a harrowing past.

We have been actively involved with Zest4Kidz since its foundation in 2006. Our main focus has been on doing as much as we can to help children in orphanages and children's prisons in Belarus. Many of the facilities in this former soviet republic are desperately underfunded and manned by staffs which are severely overworked. The children within these facilities find themselves there due to the death of parents, or simply because they were abandoned due to the poverty or imprisonment of their guardians. The Portobello Institute team have regularly travelled to the orphanages and

children's prisons that Zest4Kids have committed itself to helping. These trips have been life changing experiences for all of the team, many of whom have returned several times. The "Stuff a Stocking" project is one which generates particular enthusiasm around the building as staff rush to fill Christmas Stockings, which they hand-deliver to children who would otherwise receive nothing at Christmas.

Portobello Institute would like to thank everyone involved in this project to date for their continued support and commitment in creating lasting loving memories for children who so desperately need them. A special thank you must also go to the tutors of Portobello Institute who not only bring armfuls of gifts but also bring their essential skills in Montessori Teaching, Special Needs Education and Make-up artistry. If you would like to get involved with these trips or would like further information regarding our partnership with Zest4Kidz please visit our website www.portobelloinstitute.ie.



P

Portobello Montessori School

“One test of the correctness of educational procedure is the happiness of the child.”
– Maria Montessori

Tucked behind the college is Portobello Montessori School. Since 2004 children from two and a half to six years of age have been taught in the school through the Montessori Method of education by Portobello trained teachers who are passionate about Maria Montessori’s method. Although children come and go through the years the result is always the same; independent, sociable, curious children who can’t wait to continue learning in primary education. Through the child centred, specialised Montessori equipment and trained teachers, the children develop a positive attitude to learning, a thirst for knowledge and confidence which makes the transition from preschool to primary education simple. Even our non-national children who started with little or no English picked up English within a couple of months which delighted their guardians and made for an easier learning experience in school. Dr. Maria Montessori developed a method

that made the child central, the environment second and the teacher overseeing it all. The exercises are catered towards the senses, developing the child’s concentration and motor skills. They contain a “control or error” so that the child sees his / her own mistakes and strives to figure out how to get it right. The room is a prepared environment with attractive exercises which teach the child about language, mathematics, culture and even science without formal classes where the teacher speaks and the children listen. The children learn through doing. The school is open from 8am – 6pm daily for 51 weeks a year (only closing for Christmas). It is open to students and staff in the college as well as the general public. Meals are provided. There is a 10% discount for students and staff but there is room for only sixteen children, so places are limited. For further information contact: 01-8873807.